

## FACE ESSENTIAL SEBUM BALANCE

### Introducing Catalent's Essential Sebum Balance CosmoPod® Twist-Off Capsules

#### Product Description

This highly effective blend of essential oils and vegetal extracts works efficiently on face sebum and can deliver clearer skin in a few weeks. The nano-encapsulation technology provides enhanced skin permeation and protection of highly sensitive actives for even greater effectiveness.



INGREDIENTS	HOW IT WORKS	BENEFITS
Biopolymeric capsules active ingredients	Enzymatic specific release trigger Film forming shield Protects sensitive ingredients, provides increased stability	Longer and controlled delivery of active ingredients on skin (8-12 hours): <ul style="list-style-type: none"> <li>Targeted efficacy with reduced dose</li> <li>Reduced risk of irritation</li> </ul> Safe, not a nanomaterial >200nm
Cucurbita Pepo seed oil	It is rich in Vitamin A and Linoleic Acid (essential fatty acid that the body cannot produce)	Protects from oxidation
Rosmarinus Officinalis leaf EO	Refreshing action Antimicrobial Sebum balance	Pleasant application (refreshing and natural herbal scent) Helps to reduce skin imperfections Reduction of pore size
Mentha Piperita EO		
Salvia Sclarea EO		
Chamomilla Recutita flower oil	Soothing agent	Soothing
D- Panthenol	Gently aids natural skin recovery	Soothing Provides comfort on application

### COSMETIC EFFICACY TESTING

NUMBER OF CONSUMER PARTICIPANTS: 31 total (10 with sensitive skin) with oily and acne-prone skin

AGE: Between 13 and 35 years (11 teenagers)

SEX: Female and male

DURATION: 4 weeks

DATA COLLECTION PERIODS: T<sub>0</sub>, T<sub>2</sub> weeks, T<sub>4</sub> weeks

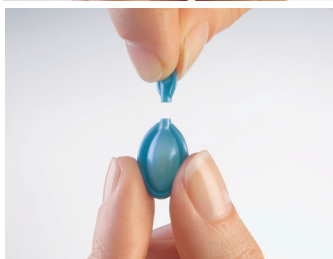
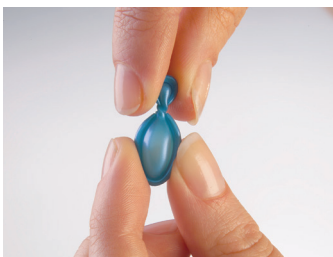
FREQUENCY: Twice daily

SELECTION CRITERIA:

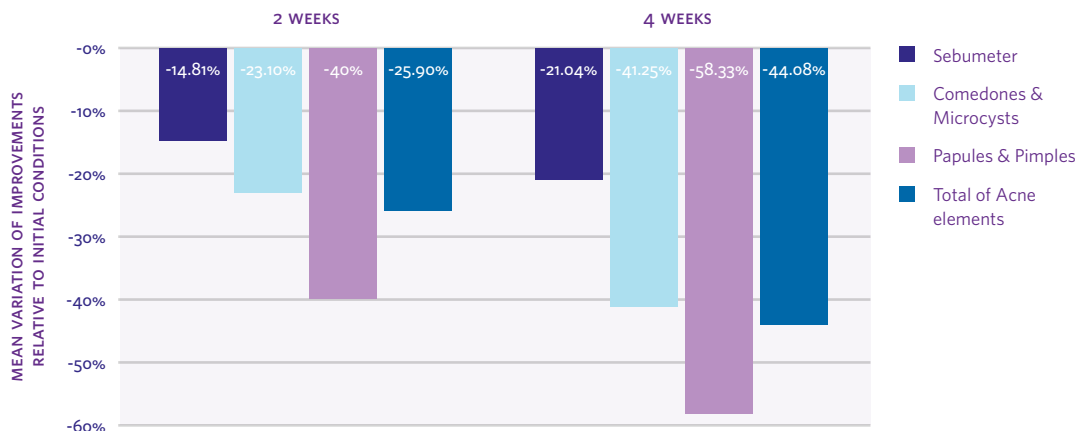
- Throughout the duration of the study and prior (1 week of preconditioning), it was requested that participants use the same cleanser in the morning and in the evening and not to use products with similar activity to the test product (Cosmetics, OTC's, Peels, Scrubs, etc.).

### RECOMMENDED USE

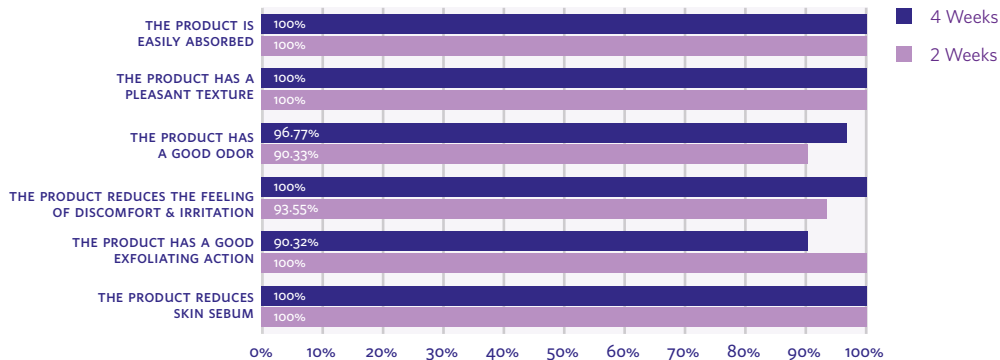
- Twist or snip-off capsule neck to open.
- Apply on cleansed skin with a delicate massage.
- Avoid contact with eyes. Wash hands after application is completed.



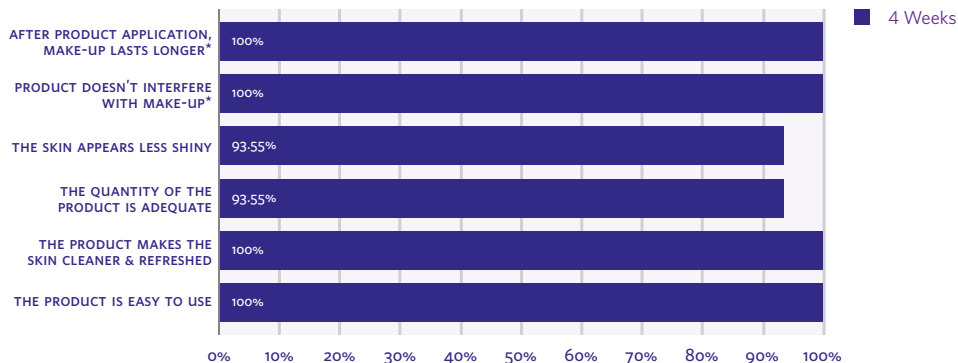
### INSTRUMENTAL EVALUATION & DERMATOLOGICAL ASSESSMENT - OVERALL RESULTS



### SUBJECTIVE EVALUATION AFTER 2 & 4 WEEKS



### SUBJECTIVE EVALUATION AFTER 4 WEEKS



\*FEED BACK FROM THE 21 WOMEN IN THE PANEL WEARING MAKE-UP

more products.  
better treatments.  
reliably supplied.™

Discover more solutions at [catalent.com/beauty](http://catalent.com/beauty)  
GLOBAL + 1 888 SOLUTION (765-8846)  
EU 00800 88 55 6178  
[solutions@catalent.com](mailto:solutions@catalent.com)